



**BK BIRLA CENTRE FOR EDUCATION**  
**SARALA BIRLA GROUP OF SCHOOLS**  
**SENIOR SECONDARY|CO-ED DAY CUM BOYS' RESIDENTIAL SCHOOL**  
**MID-TERM EXAMINATION 2023-24**



**EVS**

Class :II  
Date :13.10.23  
Admission No.:

Duration:1hr30min  
Max. Marks : 40  
Roll No.:

A. Answer the following:-

1. Name some hobbies.

2

---

2. What are internal organs. Give examples.

2

---

---

3. What are energy giving food? Give examples.

2

---

---

4. What are festivals?

2

---

---

5. Name some religious festivals.

2

---

---

6. When do we celebrate Gandhi Jayanti?

2

---

---

7. What are nuclear family?

2

---

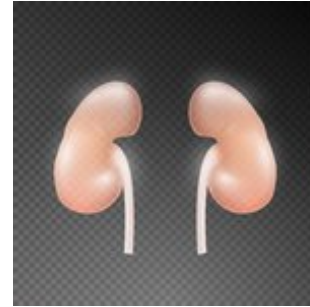
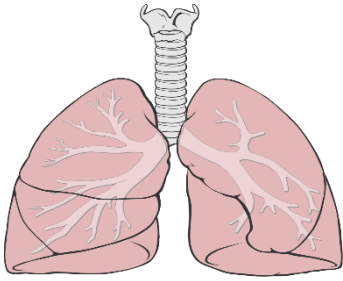
---

8. What are portable houses? Give example.

2

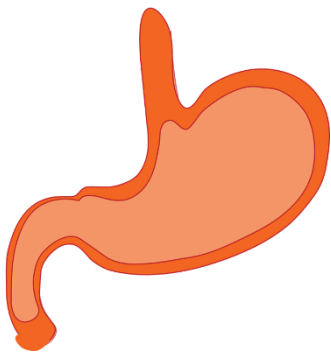
B. Identify the pictures :-

2X4=8



\_\_\_\_\_

\_\_\_\_\_



\_\_\_\_\_

\_\_\_\_\_

C. Fill in the blanks :-

1X4=4

1. Our \_\_\_\_\_ help us to breathe.
2. We get \_\_\_\_\_ from silkworms.
3. We celebrate Republic Day on \_\_\_\_\_.
4. A house made of mud and straw are called \_\_\_\_\_.

D. Write true / false :-

1X4=4

1. We have two hearts in our body \_\_\_\_\_.

2. We should eat a balanced diet \_\_\_\_\_.
3. A joint family has a small number of family members \_\_\_\_\_.
4. Amason lays the bricks with cement \_\_\_\_\_.

E. Match the following:-

1X4=4

IGLOO

CARAVAN

HUTS

SLOPING ROOFS

mud and straw

mountains

wheels

snow

F. Colour and write the name :-

2X2=4



\*\*\*\*\*THE END\*\*\*\*\*

