

VIII  
Date: 09/12/'24

Class:  
Duration: 1Hr  
Max. Marks: 25

### SECTION-A

Select and write the most appropriate option out of the four options given for each of the questions 1 - 3.

- (c) Cotton cloth 1
- (a) Hz
- (a) Schwann, Schleiden and Virchow 1

### SECTION B

Question No. 4 to 8 are very short answer questions

4. 2

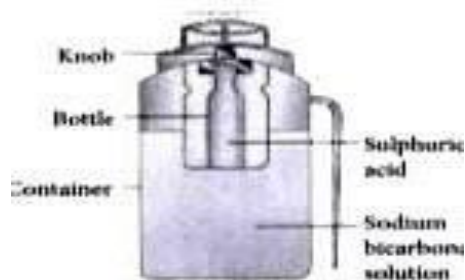


Fig.: A soda-acid type fire extinguisher

5. **Fuel:** A combustible substance must be present. (any two points) 2
- Oxygen:** A source of oxygen or air is required
  - Heat:** The combustible substance must be heated to its ignition temperature 2
6. Noise pollution occurs when unwanted sounds enter the environment. The potential health effects of noise pollution include increased stress levels, sleep disturbance, or hearing damage. 1+1
7.  $f = \text{no. of oscillation per second}$   
 $2 \text{ min} = 120\text{sec}$   
Number of oscillation per second =  $420/120$   
 $= 3.5\text{Hz}$  1+1

8. Lysosomes are called as suicidal bags because in a worn out, damaged or old cell, lysosomes automatically burst. The lytic enzymes present in the lysosome digest their own cells.

2

### SECTION C

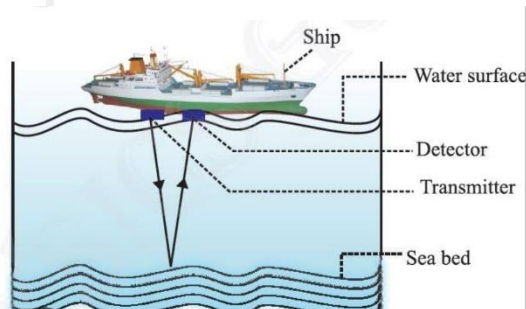
Question No. 9 to 12 are short answer questions

9. (a) material such as coal, gas, or oil that is burned to produce heat or power. 3

RENEWABLE AND NON-RENEWABLE

- (b) Sulphur dioxide, nitrogen dioxide, Carbon monoxide etc

10. SONAR : Sound Navigation & Ranging.



1. It consists of a transmitter and a detector and is installed in a ship or a boat.
2. The transmitter in SONAR produces and transmits powerful ultrasonic waves.
3. The ultrasonic waves travel through the water and after striking the target the beam is reflected from the seabed and is received by an underwater detector (mounted on the ship).

1+1+1

11.

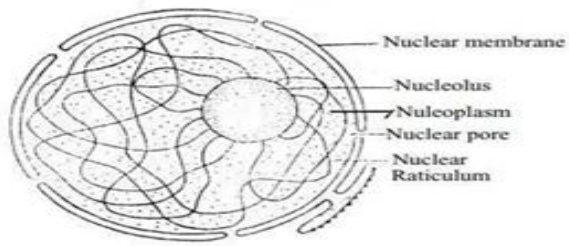
Plant cell	Animal cell
1. The cell wall is the outermost covering on the cell. The plant cells have both cell wall and the cell membrane	1. The cell membrane or plasma membrane is the outermost covering of the cell. The animal cells do not have cell wall
2. The vacuoles are large and centrally placed.	2. The vacuoles are small or absent.
3. There are plastids in the plant cells. The chloroplasts have chlorophyll.	3. The plastids are absent in the animal cells.
4. The lysosomes are absent in the plant cells.	4. Lysosomes are present in the animal cells. They contain digestive enzymes.
5. The cytoplasm is thin and pushed to the periphery due to central vacuole.	5. The cytoplasm is dense and granular. It is uniformly spread throughout the cell.

(Any three differences from above)

1x3

12. a.Nucleus  
label

½ dia+1 ½



b. Prokaryotic cells do not have a nucleus instead they have a nucleoid at the centre of the cell. Whereas Eukaryotic cells have a well developed membrane bound prominent nucleus and other membrane-bound organelles.

1

**\*\* Best of luck\*\***